

Fungicidal activity + anti-itching ingredients and antifungal ingredients

# ブテナロック<sup>®</sup>V<sub>α</sub> スプレー

## Butenalock<sup>®</sup>V<sub>α</sub> Spray

Therapeutic drug for athlete's foot/ringworm that contains butenafine hydrochloride

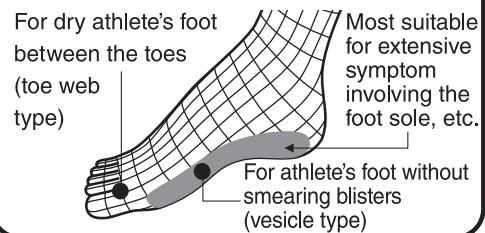
### Product features/characteristics

- Athlete's foot/ringworm are diseases caused by infection of mold (fungus) called Trichophyton in the corneal layer of the skin surface. Trichophyton invades the keratins in the corneal layer of the skin surface, inducing severe itching.
- Butenalock V<sub>α</sub> Spray is a therapeutic drug for athlete's foot/ringworm with excellent fungicidal effect on the pathogenic fungi in athlete's foot (Trichophyton).

Contains "Butenafine hydrochloride" with excellent fungicidal activity. Works on itching athlete's foot!

- Penetrates well into the corneal layer and kills the pathogenic fungi in athlete's foot (Trichophyton).
- In addition to anti-itching ingredients, "Chlorpheniramine maleate", "Dibucaine hydrochloride", and "Crotamiton", l-menthol provides a cooling sensation to suppress itching.
- Contains a sterilizing ingredient "isopropyl methylphenol."
- Contains anti-inflammatory "glycyrrhetic acid."
- Due to excellent skin retention, this product works just by once daily usage.
- Adjustable nozzle suitable for both narrow affected area between the toes and wide affected area on the heel, etc.

Example of applications of Butenalock V<sub>α</sub> [Spray]  
(Also applicable to other symptoms.)



### ⚠️[Precautions]

**⊗ Do not use:** [Failure to follow directions may result in worsening of current symptoms or cause adverse reactions.]

1. Do not use:  
if you have a history of allergic symptoms to this product or ingredients of this product.
2. Do not use this product on the following areas:
  - (1) Eyes and the surrounding area, face, mucous membranes (e.g., oral cavity, nasal cavity, and vagina), scrotum, and external genitalia.
  - (2) Eczema.
  - (3) Affected areas with severe infiltration, sores, cracks, or trauma.



### Ask a doctor:

1. Ask a doctor, pharmacist, or registered distributor before use,
  - (1) If you are being treated by a doctor.
  - (2) If you are pregnant or possibly pregnant.
  - (3) Infants.
  - (4) If you have a history of allergic symptoms due to drugs.
  - (5) If the affected area is extensive.
  - (6) If the affected area is purulent.
  - (7) If you are not sure whether the cause is "Eczema" or "Tinea pedis, tinea cruris, or tinea corporis"  
(If the symptom is itch/sore in the scrotum, it is usually caused by eczema.)
2. If the following symptoms appear after use, there may be side effects. Stop using this product immediately, and ask a doctor, pharmacist, or registered distributor within this information leaflet.

Related area	Symptoms
Skin	Rash/redness, itching, eruption, swelling, irritation, warmth, skin shedding, sores, blisters, dryness, sting, cracks

3. If the symptoms persist after 2 weeks of use, stop using the product and ask a doctor, pharmacist, or registered distributor within this information leaflet.

**[Indications]** Tinea pedis, tinea cruris, and tinea corporis

**[Dosage and usage]** Spray a proper amount on the affected area once daily.

<Precautions related to dosage and usage>

- (1) Do not use when the affected area and the surrounding are not clean.
- (2) Avoid contact with the eyes. If eye contact occurs, rinse immediately with water or lukewarm water and consult an ophthalmologist right away.
- (3) Children should use this product only under supervision of a guardian.
- (4) For external use only.
- (5) If athlete's foot is present between the toes, spray approximately 2 to 3 cm away from the affected area. For other athlete's foot/ringworm, spray approximately 5 cm away from the affected area.
- (6) Check the site of the nozzle well and do not spray on the face, particularly eyes, or inhale.

**[Ingredients/contents]**

Active ingredients	Content (per 1 mL):	Active ingredients	Content (per 1 mL):
Butenafine hydrochloride	10mg	l-menthol	20mg
Dibucaine hydrochloride	2mg	Crotamiton	10mg
Chlorpheniramine maleate	5mg	Isopropyl methylphenol	3mg
Glycyrrhetic acid	2mg		

Additional ingredients: Ethanol, macrogol

<Precautions related to ingredients>

It contains alcohol and may sting the skin during spraying.

**Precautions for storage and handling**

- (1) Store in a cool place with cap closed tightly, away from direct sunlight.
- (2) Keep out of reach of children.
- (3) Avoid storing the product in other containers (it may result in a misuse or a change in quality).
- (4) Do not use the product after the expiration date. Also, use as soon as possible after opening the package even if the expiration date has not passed for ensuring the quality.
- (5) Keep away from fire and do not place the product in fire. Also, the container should not be thrown into fire after use.
- (6) This product may soften synthetic resins (styrol) or dissolve paint. Make sure that this product does not come into contact with bags, floors, or furnitures.

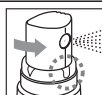
<Packaging> 20mL

**[How to spray]**

- This is a pump spray product with an "Adjustable nozzle" with a function to allow pin-point spraying to a narrow affected area, in addition to a mist spray for easier application to an extensive area.
- You can switch the nozzle not only according to the symptoms but also according to your preference.

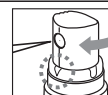
When using the wide-angle (mist) spray

- (1) Turn the button until a vertical ditch in the front of the button aligns with the mark, "■" and clicks.
- (2) Hold the can approximately 5 cm away from the affected area to spray.



When using the narrow-angle (pin-point) spray

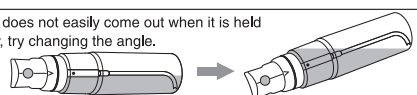
- (1) Turn the button until a vertical ditch in the front of the button aligns with the mark, "▼" and clicks.
- (2) Point and spray approximately 2 to 3 cm away from the affected area.



**Cautions**

- Turn the button until it clicks. Button will not go down and you will not be able to spray if it is not turned correctly.
- Do not forcibly lower the button if it does not go down easily. It may result in a breakage.
- Turn the button between the marks "■▼". It may result in a breakage if the button is turned forcibly.
- It may be difficult to spray the product at the beginning of use or after some time.
- If it is difficult to spray the product, try spraying several times with "Wide-angle spray nozzle".

If the liquid does not easily come out when it is held horizontally, try changing the angle.



### 5 tips for the treatment of athlete's foot

**1** Always ensure that your feet are not sweating.

Trichophyton multiplies when the temperature is 15°C and above, with humidity of 70% or more. Always prevent sweating and try to keep your feet dry.



**2** Keep the affected area clean. It is important to wash the affected area with soap everyday.

Although this product is effective if used once daily, it is important to take appropriate long-term measures such as avoiding sweating and keeping the shoes and socks clean (frequent washing).



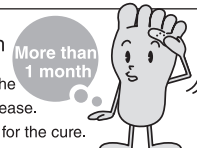
**3** Apply the drug thinly, not only to the affected area but also to the surrounding area.

Apply the drug extensively because the area of infection of Trichophyton is often wider than the area with symptoms.



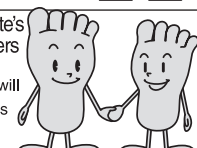
**4** Continue to apply the medicine to the athlete's foot for at least 1 month even after symptoms disappear.

Even if symptoms disappear, it may be that only the activity of Trichophyton is suppressed, not the disease. Be patient, for continuous application is essential for the cure.



**5** If one of the family members has athlete's foot, it is recommended that all members of the family should also be treated.

If one of the family members has athlete's foot, it will pass on to the others. Take a treatment as soon as possible if you notice a symptom.



Daily comprehensive foot care is important for the cure of athlete's foot.